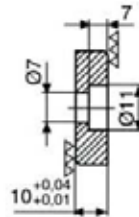
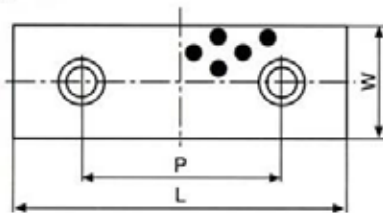


PLACA GUÍA
BRONCE CON GRAFITO
(BRONZE WITH GRAPHITE WEAR PLATE)

5131

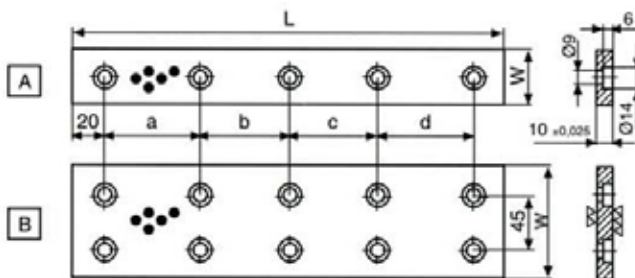
a)



a)

REFERENCIA	Dimensiones mm / Size		
	W	L	P
5131 - 18 x 75	18	75	45
5131 - 18 x 100		100	50
5131 - 18 x 125		125	75
5131 - 18 x 150		150	100
5131 - 28 x 75	28	75	45
5131 - 28 x 100		100	50
5131 - 28 x 125		125	75
5131 - 28 x 150		150	100
5131 - 38 x 75	38	75	45
5131 - 38 x 100		100	50
5131 - 38 x 125		125	75
5131 - 38 x 150		150	100
5131 - 48 x 75	48	75	45
5131 - 48 x 100		100	50
5131 - 48 x 125		125	75
5131 - 48 x 150		150	100

b)



M6 - Tornillos de cabeza cilíndrica

b)

REFERENCIA	Dimensiones / Size (mm)						Tornillos Screws	Forma Form
	W	L	Distancia entre agujeros / Distance between holes					
			a	b	c	d		
5131 - 35 x 100	35	100	60	-	-	-	2	A
5131 - 35 x 150		150	55	55	-	-	3	
5131 - 35 x 200		200	55	50	55	-	4	
5131 - 35 x 250		250	70	70	70	-		
5131 - 35 x 300		300	65	65	65	65		
5131 - 35 x 350		350	80	75	75	80		
5131 - 50 x 100	50	100	60	-	-	-	2	
5131 - 50 x 150		150	55	55	-	-	3	
5131 - 50 x 200		200	55	50	55	-	4	
5131 - 50 x 250		250	70	70	70	-		
5131 - 50 x 300		300	65	65	65	65		
5131 - 50 x 350		350	80	75	75	80		5
5131 - 75 x 150	75	150	110	-	-	-	4	B
5131 - 75 x 200		200	80	80	-	-	6	
5131 - 75 x 250		250	105	105	-	-		
5131 - 75 x 300		300	85	90	85	-		
5131 - 75 x 400		400	120	120	120	-		
5131 - 75 x 500		500	115	115	115	115	10	

MB - Tornillos de cabeza cilíndrica

MATERIAL:

Bronce al aluminio DIN 1714

DUREZA: HB ≥ 179

LUBRICANTE:

Insertos de grafito

FORMA DE PEDIDO:

5131 - W x L

MATERIAL:

Aluminum Bronze DIN 1714

HARDNESS: HB ≥ 179

LUBRICANT:

Graphite plugs

HOW TO ORDER:

5131 - W x L